



ENDU[®] COMBI RD^{CS}

SUPER REGIONAL CLOSED SHOULDER DRIVE TIRE



Copyright © 2021 Apollo Tires

APOLLO VREDESTEIN TIRES INC
1175 Peachtree St NE
Suite 1000
Atlanta, GA 30361
contact.us@apollotyres.com



ENDU[®] COMBI RD^{CS}

THE ENDU[®] COMBI RD^{CS} IS A LONG-WEARING CLOSED SHOULDER DRIVE TIRE SPECIFICALLY DEVELOPED FOR REGIONAL & SUPER REGIONAL OPERATIONS IN THE USA.

M + S

REGIONAL

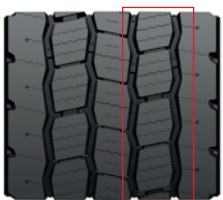


SUPER REGIONAL

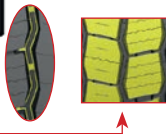


PRODUCT CODE	TIRE SIZE	PLY RATING	LOAD RANGE	LOAD INDEX	SPEED SYMBOL	OVERALL DIAMETER (INCH)	SECTION WIDTH (INCH)	ORIGINAL TREAD DEPTH (1/32")	STATIC LOADED RADIUS (INCH)	RECOMMENDED RIM WIDTH (INCH)	ALTERNATE RIM WIDTH (INCH)	TIRE WEIGHT		LOAD DETAILS (LBS)	
												LBS	KG	SINGLE	DUAL
2021301	11R22.5	14	G	144/142	L	41.4	11.1	25	19.3	8.25	7.50	138.7	62.9	6175 lbs @ 105 psi	5840 lbs @ 105 psi
2021300	11R22.5	16	H	146/143	L	41.4	11.1	25	19.3	8.25	7.50	138.7	62.9	6610 lbs @ 120 psi	6005 lbs @ 120 psi
2021303	295/75R22.5	14	G	144/141	L	40.4	11.5	25	18.7	9.00	8.25	137.6	62.4	6175 lbs @ 110 psi	5675 lbs @ 110 psi
2021302	295/75R22.5	16	H	149/146	L	40.4	11.5	25	18.7	9.00	8.25	137.6	62.4	7160 lbs @ 125 psi	6610 lbs @ 125 psi

1 IMPROVED TIRE MILEAGE



Zig-zag grooves & well staggered blocks aids to even load distribution in tire foot print.



3 SHORTER BRAKING DISTANCE



Notches add more biting edges in tread pattern design.



2 3D SIPES FOR IMPROVED PERFORMANCE



- Deep 3D sipes provide excellent traction throughout the tread life.
- Zig-Zag groove walls provide optimized biting edges for excellent traction in all seasonal conditions.



4 MULTIPLE RETREADS



Robust construction with optimized belt package.